



CÂMARA MUNICIPAL
VIANA DO CASTELO

useful contacts

Viana do Castelo City Council > 258 809 300
Viana Welcome Centre > 258 098 415
Hospital > 258 802 100
Fire Department > 963 442 205 / 258 840 400
Volunteer Fire Department > 258 800 840
GNR (Portuguese National Guard) > 258 840 470
PSP (City Police Department) > 258 809 880
SOS - Emergency Services > 112
Emergency number for Forest Fires > 117

MAP OF VIANA DO CASTELO



information PR21

Name of Trail
Lima Valley Trail

Sponsoring Organization
Terras de Geraz do Lima Parish Council

Trail System
Average Trail

Location
Geraz do Lima

Distance
15 km

Initial Level
5m

Maximum Level Reached
394m

Minimum Level Reached
25m

Time
4h30m | 4 hours e 30 minutes

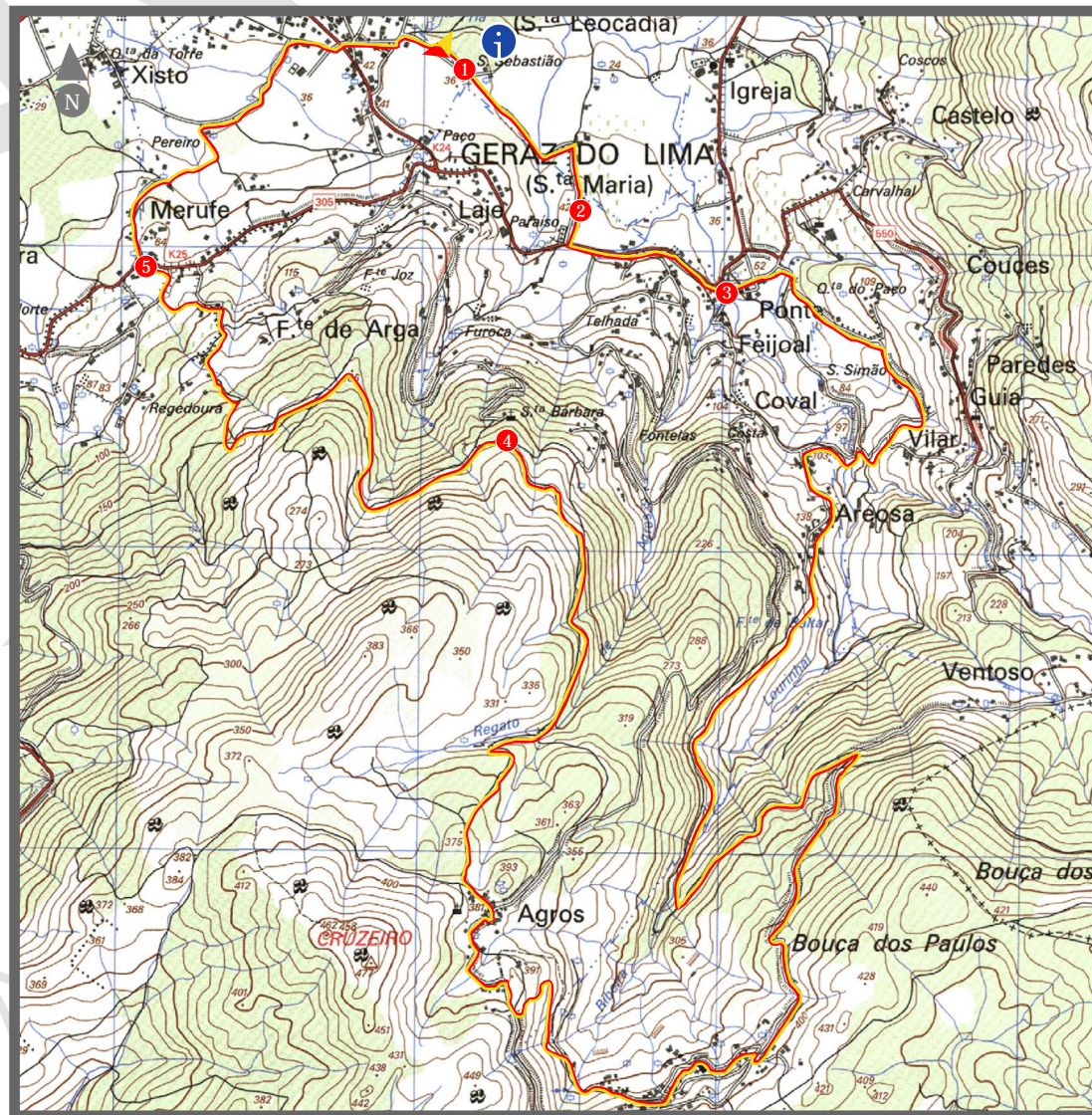
Difficulty
Moderate

Trail Type/Character
Landscape/Ecological/Cultural

Start Point
Capela de S. Sebastião, Rua de S. Sebastião, Santa Maria de Geraz do Lima

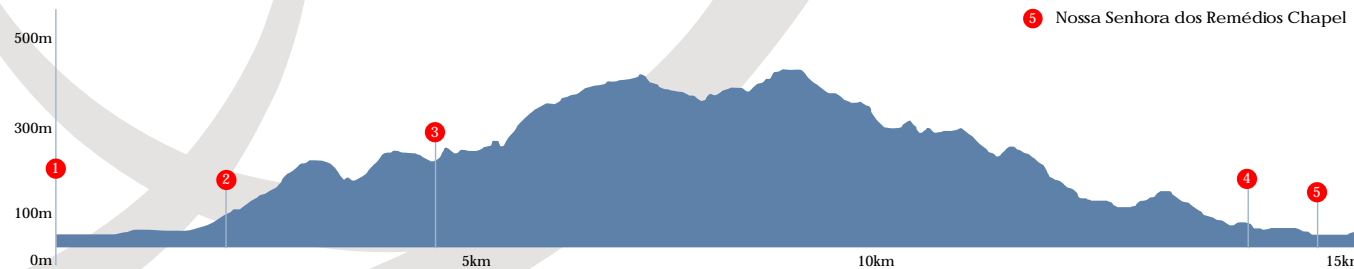
Latitude: 41° 42' 28.14" N
Longitude: 08° 40' 31.92" W

TRAILMap km



SCALE | 1:25 000

profile graph height/distance



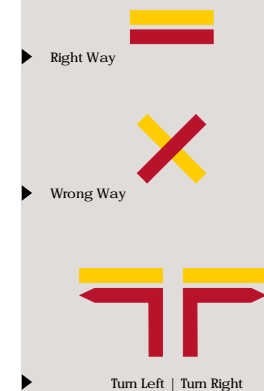
Start Point/End Point

- 1 S. Sebastião Chapel and Cross
- 2 Santa Maria Parish Church
- 3 Olive Oil Extraction Mill
- 4 Santa Bárbara Chapel and Stone Cross
- 5 Nossa Senhora dos Remédios Chapel

responsibilities

"The recommended walking trails do not exempt their users or those who promote them from taking the responsibility for any possible damage to property or personal injury which may occur when using the trails."

trail mark



trail rules

- >Stay on the trail at all times – Pay attention and obey trail signs and markings.
- >Avoid making loud noises.
- >Respect Private Property.
- >Do not litter. Take all litter with you and place in rubbish bins.
- >Be careful with livestock. Do not disturb animals.
- >Preserve nature. Do not pick flowers, collect rocks or catch animals.
- >Avoid walking alone in the mountains.
- >Be careful when foggy.
- >Always use appropriate gear and clothing – hiking boots, a raincoat and a hat.
- >Do not make fire at any time.
- >Help preserve the trail.





This is a circular trail, ideal for nature lovers. The trail begins next to the “S. Sebastião” Chapel and Crucifix in “Geraz do Lima” – these were important reference points for pilgrims of yesteryear. From here enjoy the lovely panoramic view of the Lima valley. Continue towards the “Santa Maria” Parish Church, where visitors may admire archaeological findings in and around the temple. The trail ascends to the places of “Agros” and “Vacaria”, set in a tranquil bucolic landscape with beautiful views over the valley. Descend to “Santa Leocádia de Geraz do Lima” where you may admire an old olive oil extraction mill. The mill has actually been modernized and is totally functional - a clear indication that farming activities are still quite important in the Lands of Geraz. Continue through the vineyards and wooded areas until you reach the “Santa Barbara” Chapel, here you may gaze out from a vantage point to admire the “Lima” river and “Serra d’Arga”. The next point of interest is the Nossa “Senhora dos Remedios” Chapel. What is interesting about this chapel is that it belongs to the “Solar de Merufe” (Manor). The manor originally belonged to the clergy in medieval times. Now, internationally awarded organic wines are produced on the property. The trail takes you back to the starting point.

