



trail of quintas
vila de punhe



www.cm-viana-castelo.pt

map of viana do castelo



trail rules

- >Stay on the trail at all times – Pay attention and obey trail signs and markings.
- >Avoid making loud noises.
- >Respect Private Property.
- >Do not litter. Take all litter with you and place in rubbish bins.
- >Be careful with livestock. Do not disturb animals.
- >Preserve nature. Do not pick flowers, collect rocks or catch animals.
- >Avoid walking alone in the mountains.
- >Be careful when foggy.
- >Always use appropriate gear and clothing – hiking boots, a raincoat and a hat.
- >Do not make fire at any time.
- >Help preserve the trail.

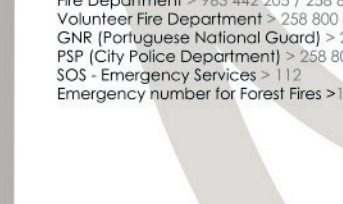
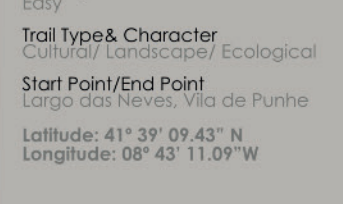
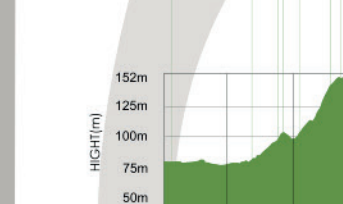
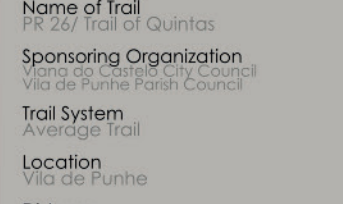
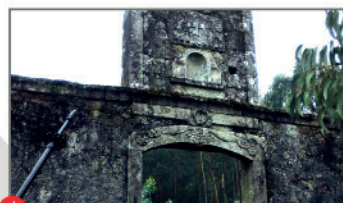
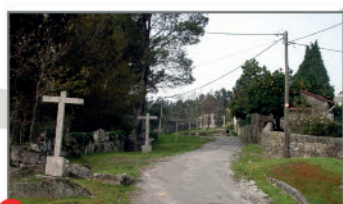
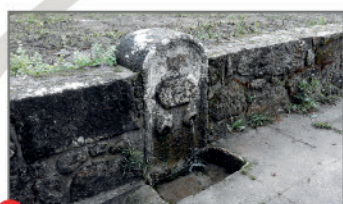
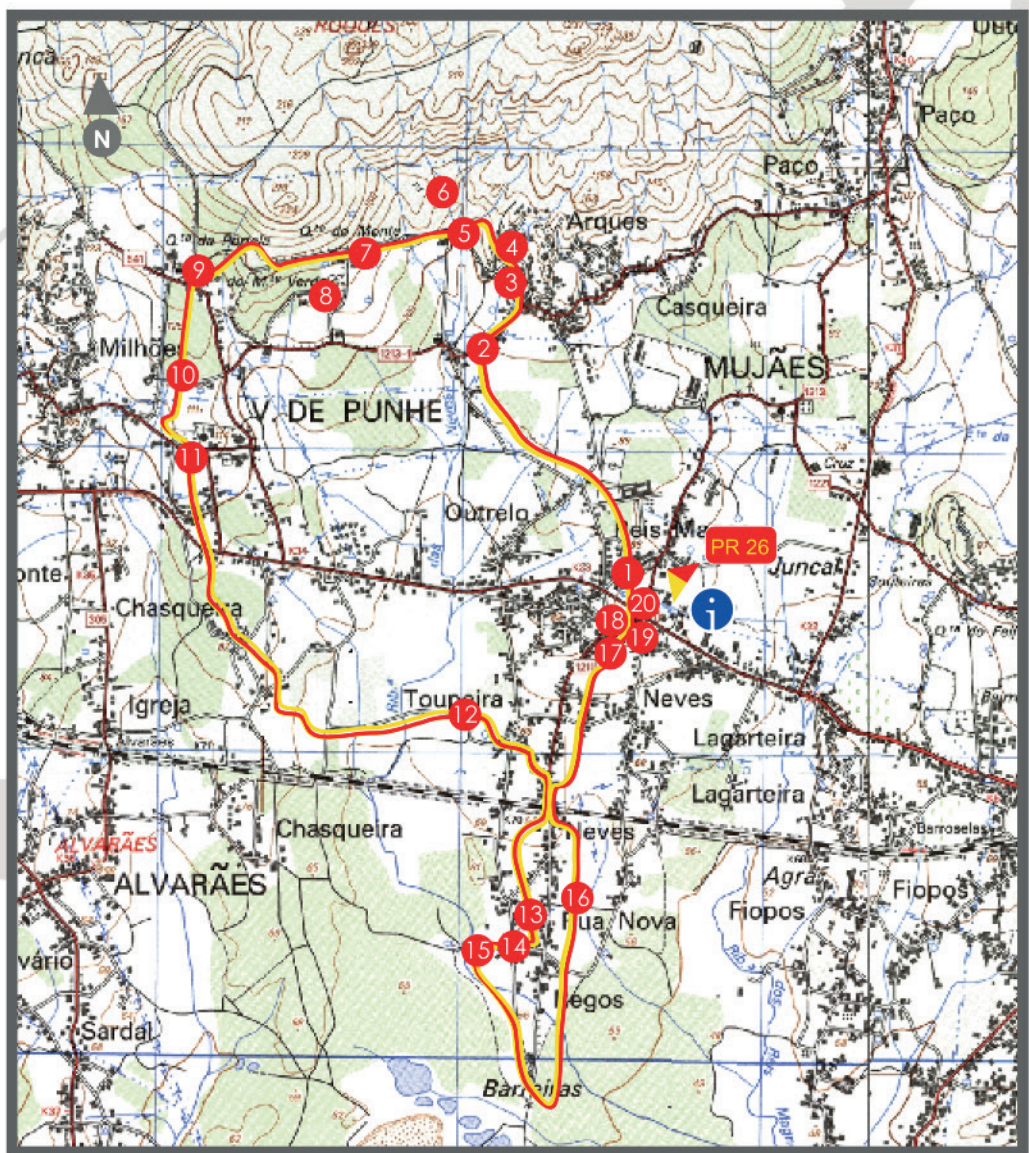
responsibilities

"The recommended walking trails do not exempt their users or those who promote them from taking the responsibility for any possible damage to property or personal injury which may occur when using the trails."

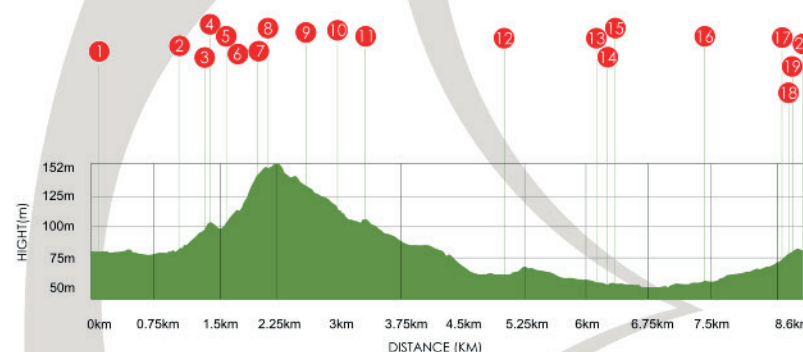
trail mark



trail map in km



profile graph / height/distance



useful contacts

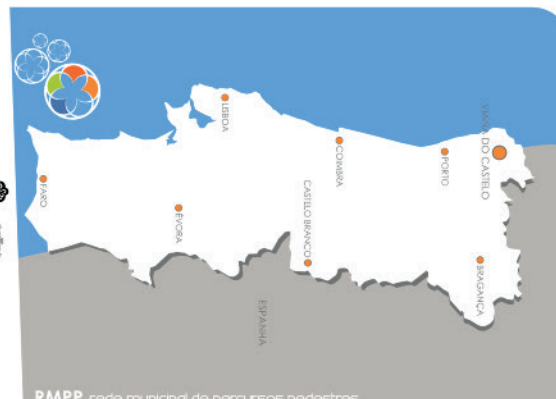
Viana do Castelo City Council > 258 809 300
Viana Welcome Centre > 258098415
Hospital > 258 802 100
Fire Department > 963 442 205 / 258 840 400
Volunteer Fire Department > 258 800 840
GNR (Portuguese National Guard) > 258 840 470
PSP (City Police Department) > 258 809 880
SOS - Emergency Services > 112
Emergency number for Forest Fires > 117



Start Point/ End Point

PR 26

- 1 Neves Tower House
- 2 Bonfim Square
- 3 Senhora do Carmo Domain
- 4 Arques Calvary
- 5 Bonfim Domain
- 6 Espina Velasco House Facade
- 7 Monte Domain
- 8 Bouça D'Arques Domain
- 9 Portela Domain
- 10 Pereira Domain
- 11 Cruzeiro Domain
- 12 Washhouse River
- 13 Sardão Domain
- 14 Inácio Mill
- 15 Boucinhas Washhouse
- 16 Matias Santos Domain
- 17 Santo António Domain
- 18 Arrais House
- 19 The 3 Abades Table
- 20 Cross of Senhor da Saúde





trail description PR 26

The "Trilho das Quintas" or (Trail of Farms) begins and ends at "Largo das Neves", in the Parish Council of Vila de Punhe, Viana do Castelo. Leaving this off, after crossing the EN308, border-right Casa da Torre de Nossa Senhora das Neves. Heading north, and reaching the old Royal Road "Estrada Real", heading to the "Largo do Bonfim" (Bonfim Square), where you can see some sunny entries of the aforementioned "Quinta do bomfim" and the "Quinta de Nossa Senhora do Carmo". Flanking, the eastern side, the wall of this domain, meeting the stone made cross set that constitutes the "Arques" Calvary, the emblazoned cover, as well as an aqueduct that used to drive water from the upper to the lower land area. Following the Royal Road, after passing by the Northern entrance of the "Quinta do Bonfim" domain; a few meters ahead, is a detour leading to the façade ruins of the "Casa de Espina Velasco" (16th century). Returning to the trail passes by the emblazoned entries of the "Quinta do Monte" domain and the "Quinta da Bouça D'arques" domain and the "Quinta da Portela" domain. This trail coincides with the "Castro de Roques" PR 19-Track one. Deriving towards South, down the street from the "Quinta dos Pereiras" domain, leading down to the the "Santa Eulália" street till the oldest parish council shrine, as well as "Quinta Cruzeiro" domain, built in 2016. Leaving towards the parish church, turning towards out the "Areias" street, Brazilian-influenced, as well as the Parochial stone made cross of the "de Milhões". Continuing South, to the "Areiais" street, after crossing the EN308, following by "Malaposta" street (toponymal, which recalls the letters carriage, as well as the parcels by the post office), up to the limit towards "Alvarães", facing the "Quinta dos Vianas" domain, the Parish Council milestone, as well as the "Amorim" shrine house. Turning left, continuing, through fields and Woods, to the "Lavadouro" (washhouse) street, turning right at the end of the same; towards platter street, and the railway cross line. Once to the other side; following towards the "Quinta do Sardão" domain, to the "Inácio" Mill, dating back to the XIX century and restored in 2014, and the public washhouse; where lots of people used to wash clothes and other items clothing related (blankets). From there, turning to your left, and following the river stream, one can observe to the right, the blue lagoon (lagoa Azul), coming from the uncovering China clay and, nowadays, is a leisure related fishing practicing area. Arriving to the "pontelha da Infia" domain, towards north, through the "Matias Santos" street, one will come across the "Quinta Matias Santos" domain. Forwarding, using the same pathway, and leaving to your right, towards the "Padre Marcelino trindade" street, getting to the "S. João" square, to the "Trinidades" house; from Brazilian influence; and the "S.joão" alcove. Further on; close by the railway, one might benefit from the nowadays non-existent "Nossa Senhora das Neves" (Our Lady of Neves) Trail, inaugurated in 1964. Once again towards the superior up railway and following towards the "Matias Santos" street, before arriving to the "Quinta de Santo António" domain (dos Arrais), fill the "Neves" square, leaving on your right-side the "Quinta dos Farias" domain. Towards the "Neves" square; one might observe the "Quinta dos Arrais" set, "Senhor da Saude" stone made cross, "Senhora das Neves" Chapel, as well as the "Três Abades" dining table; symbolic of the 3 parish councils union.

